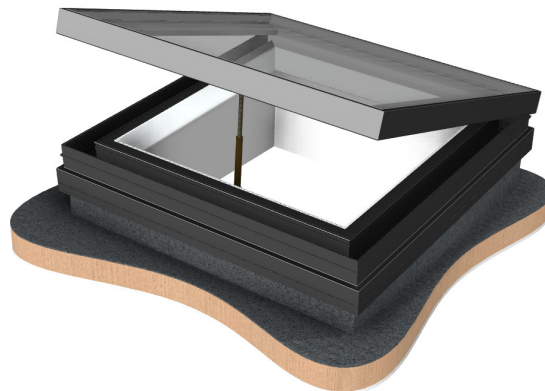


Product Data Sheet



Name:	GV Standard VisionVent
Code:	401
Type:	Hinged ventilation or access rooflight
Description:	Manually actuated, thermally broken hinged rooflight
Features:	<p>No visible kerb fixings through the use of extruded external clip on cover. Excellent overall thermal performance with concealed insulation. Reliable operation through heavy duty telescopic winder.</p> <p>There are three variants of manual VisionVent: the Solo Manual Vent Only, the Integrated Manual Vent Only and the Solo Manual Access Hatch.</p> <p>The Manual Vent Only VisionVent is used to provide ventilation. It is manually actuated by winding the telescopic spindle. Glazing Vision will supply one crank handle with each rooflight as standard, but multiple cranks can be ordered if required. The standard length is 1.5m long.</p> <p>The Integrated Manual Vent Only VisionVent is essentially identical to the Solo version, but is designed to be inset into Flushglaze framing as part of a multi-section rooflight.</p> <p>The Solo Manual Access Hatch is used to provide occasional roof maintenance access. It cannot be used to provide ventilation. The lid will open to 85°. The Hatch is opened by unlocking and turning the handle and assisting the gas struts to the fully open position. A pull handle bonded to the glazing interior is provided for closing the Hatch. On closing, the lock handle should be turned engage and locked if required.</p>
Standard Glass Specification:	Outer: 6mm HST Clear Toughened. Spacer: 20mm Warm Edge Black Silicone Sealed Argon Filled Cavity. Inner: 6mm HST Clear Soft Low E Toughened.
Standard Colours:	RAL 7015 Grey external framework and RAL 9010 internal framework.
Rooflight Control:	Manual
Power Supply:	N/A
Drive Mechanism:	Manually actuated



Thermally Broken: Yes

Seals: Combination of silicone, TPE bubble seals and dual hardness EPDM gasket.

Security: Rooflight is sealed to the upstand with butyl sealant. The telescopic spindle is structurally fixed to the interior of the rooflight base and to the internal glazing. When closed the Hatch can be locked standard euro cylinder.

Solo Manual Vent Only VisionVent Kerb Dimensions:	Min Span = 415mm Min Width = 415mm Min Pitch = 3°	Max Span = 2365mm Max Width = 2365mm Max Pitch = 70°
--	---	--

Integrated Manual Vent Only VisionVent Dimensions:	Min Span = 450mm Min Width = 450mm Min Pitch = 3°	Max Span = 2400mm Max Width = 2400mm Max Pitch = 70°
---	---	--

Solo Manual Access Hatch VisionVent Kerb Dimensions:	Min Span = 865mm Min Width = 865mm Min Pitch = 3°	Max Span = 1165mm Max Width = 1465mm Max Pitch = 70°
---	---	--

All Variants Kerb Requirements:	Min Height = 150mm Thickness = 100mm MIN, 125mm MAX
--	--

Use for Access: Manual Access Hatch version only – provides maintenance access

Sales Drawings:	<u>Drawing Number</u>	<u>Description</u>
	401-ASS-404	Integrated Manual VisionVent
	401-ASS-409	Manual Vent Only
	401-ASS-410	Manual Access Hatch
	401-ASS-412	Manual Vent Only Barge Configuration

Optional extras

Rain Sensor:	NO	Battery back-up:	NO
Solenoid Bolt:	NO	Wall Abutted:	YES (Bespoke)
Thermostat:	NO	Dual Colour:	AS STANDARD
BMS Integration:	NO	Special Colour:	YES
Rain Sensor Overrides:	N/A	Security System Integration:	NO
Trickle Vents:	NO	Downlighter:	N/A
Round:	NO	Multi-Part:	N/A
RITEC Coating:	YES	Remote Control:	NO
Multi-Part with Glass Fins:	N/A		

