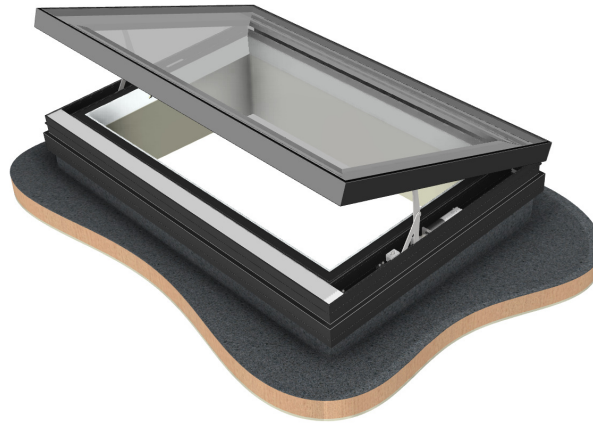


Product Data Sheet



- Name:** GV Standard VisionVent
- Code:** 401
- Type:** Hinged access and/or ventilation rooflight
- Description:** Electrically actuated thermally broken hinged rooflight
- Features:**

No visible kerb fixings through the use of extruded external clip on cover. Excellent overall thermal performance with concealed insulation. Reliable operation through synchronised mechanisms employing encoder feedback. The dual lift mechanism provides stability in the open position for the larger sizes it offers good security and unobstructed clear views. Advanced electronics control system installed within an IP rated enclosure offering low opening currents. Dedicated building management system (BMS) input.

There are four variants of electric VisionVent: Solo Electric Vent Only, Integrated Electric Vent Only, Solo Electric Vent and Access, and Integrated Electric Vent and Access. The integrated versions are similar to the Solo equivalent but are designed to be inset into Flushglaze framing as part of a multi section rooflight.

The primary function of the Vent & Access VisionVent is to provide ventilation, opening to a maximum of between 14° and 26° dependant on rooflight span. It is controlled by GV's wall mounted LED control switch, responding to both one touch, and press and hold requests. The secondary function is to provide maintenance access. Assisted by gas struts, the lid can be detached from the mechanisms and manually opened to approximately 85°. The product is appropriate for maintenance access only, where regular access is required a GV Standard Skydoor is recommended for these applications. The Vent Only VisionVent is similar but the lid cannot be detached so cannot provide access.

The electric VisionVent is powered by an external 24V power supply as standard. Glazing Vision will provide one power supply for each electric VisionVent purchased. In the event of mains failure the VisionVent will cease to function. A battery backed supply is available as an optional extra.

The VisionVent mechanisms have an encoder output used by the control electronics to achieve closed loop synchronisation.



Standard Glass Specification:	Outer: 6mm HST Clear Toughened. Spacer: 20mm Warm Edge Black Silicone Sealed Argon Filled Cavity. Inner: 6mm HST Clear Soft Low E Toughened.
Standard Colours:	RAL 7015 Grey external framework and RAL 9010 internal framework.
Rooflight Control:	Intelligent wall switch as standard. Optional controls available.
Power Supply:	External 24V 300W mains powered supply.
Drive Mechanism:	Motor driven scissor linkage mechanism with encoder feedback.
Thermally Broken:	Yes
Seals:	Combination of silicone, TPE bubble seals and dual hardness EPDM gasket.
Security:	Mechanisms cannot be back driven due to motor gearing reduction and mechanisms cannot be disconnected from lid from outside whilst closed. Rooflight base is sealed to upstand with polybutyl sealant.

Solo Electric Vent Only VisionVent Kerb Dimensions:	Min Span = 865mm Min Width = 845mm	Max Span = 2365mm Max Width = 2365mm
--	---------------------------------------	---

Integrated Electric Vent Only VisionVent Dimensions:	Min Span = 902mm Min Width = 882mm	Max Span = 2402mm Max Width = 2402mm
---	---------------------------------------	---

Solo Electric Vent and Access VisionVent Kerb Dimensions:	Min Span = 890mm Min Width = 845mm	Max Span = 1465mm Max Width = 1965mm
--	---------------------------------------	---

Integrated Electric Vent and Access VisionVent Dimensions:	Min Span = 927mm Min Width = 882mm	Max Span = 1502mm Max Width = 2002mm
---	---------------------------------------	---

All Variants Kerb Requirements:	Min Pitch = 3° Min Height = 150mm	Max Pitch = 70° Min Thickness = 100mm
--	--------------------------------------	--

Use for Access: Yes – Vent & Access versions can be used for occasional maintenance access only.

Sales Drawings:	<u>Drawing Number</u>	<u>Description</u>
	401-ASS-400	VisionVent General Arrangement
	401-ASS-401	VisionVent Kerb Detail
	401-ASS-402	VisionVent Rain Sensor Positioning
	401-ASS-403	VisionVent Client Wiring Diagram
	401-ASS-405	VisionVent Solo Electric Section
	401-ASS-406	VisionVent Integrated Sections
	401-ASS-407	Section A-A Through Integrated VisionVents
	401-ASS-408	Section B-B Through Integrated VisionVents
	401-ASS-411	VisionVent Wall Abutment Detail



Optional extras

Rain Sensor:	YES	Battery back-up:	NO
Security System Integration:	NO	Rain Sensor Overrides:	N/A
Thermostat:	YES	Dual Colour:	AS STANDARD
BMS Integration:	YES	Special Colour:	YES
Trickle Vents:	NO	Solenoid Bolt:	N/A
Wall Abutted:	YES (Bespoke)	Downlighter:	N/A
Round:	NO	Multi-Part:	N/A
RITEC Coating:	YES	Remote Control:	YES
Multi-Part with Glass Fins:	N/A		

