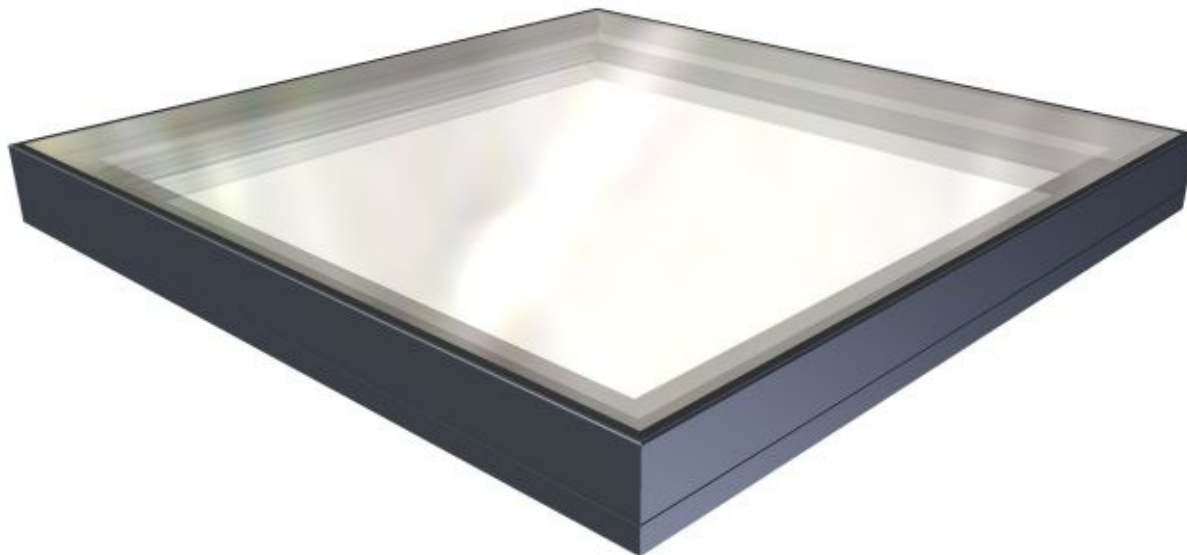


Product Data Sheet Flushglaze Walk-On



Name: Flushglaze (Walk-On)

Code: 402

Type: Fixed Rooflight for Walk-On

Description: A fixed glazing system comprising polyester powder coated aluminium extrusion and double glazed walk-on unit. Designed to be installed at 1° from horizontal. Available in either single or multipart format, the latter consisting of multiple sections of glazing.
Flushglaze rooflights are designed to provide maximum daylight with minimal visible internal structure.

Features: No visible fixings. Achieved using a Glazing Vision design clip-on detail which covers over structural fixings to leave a completely flush external finish. *(Excludes internal and round variants).*

External insulated clip-on flashing on wall abutment detail to improve thermal performance and reduce risk of condensation forming internally.

Increased strength for bonded frames through additional and improved cleating. *(Excludes internal and round variants).*

Technical product catalogue of data including; sales drawings, schedule and manufacturing information.

Kerb cover extrusion to mask the structure of the kerb top from external visibility. This is an optional extra. *(Excludes internal and round variants).*



Standard Glass Specification:

Outer: 25.5mm Clear Heat Soak Tested Toughened Laminate
Spacer: 14mm Black Silicone Sealed Argon Filled Cavity
Inner: 6mm Clear Soft Low E Toughened

Design loadings for standard glass specification:

Uniform load = 1.5kN/m²
Concentrated load = 2.0kN

Properties for standard glass specification:

Centre pane U-value = 1.1W/m²K Shading Coefficient = 0.56
Light Transmittance = 70.0% Mass = 67 Kg/m²
Light Reflectance = 10.0%

Standard Colour:

RAL 7015 Grey

Roolight Control:

N/A

Power Supply:

N/A

Drive Mechanism:

N/A

Thermally Broken:

Dual density rubber foam seal on internal of kerb mount detail and external insulated flashing on wall abutment detail. *(Excludes internal and round variants)*

Thermal Performance (U-Value):

U_w = 1.51 W/m²K (1200mm x 1200mm Overall Kerb Dimension)
U_d = 1.31 W/m²K (1200mm x 1200mm Overall Kerb Dimension)

Seals:

Combination of silicone, poly-butyl and rubber seals.

Security:

Secured to kerb with structural fixings and poly-butyl adhesive.

Kerb Dimensions:

Min Height = 150mm
Min Thickness = 75mm
Min Span = 450mm
Min Width = 400mm
Min Pitch = 1° (Recommended = 1°)

Max Span = 4000mm
Max Width = 4000*mm
Max Pitch = 70°
Max Kerb Area = 3.0m²*

**For multipart, this is per section*

NOTE: MAXIMUM SPAN/WIDTH VARIES DEPENDANT ON THE OTHER. ALWAYS USE THE SCHEDULE TO CONFIRM SIZES.

Use for Access:

N/A

Sales Drawings:

<u>Drawing Number</u>	<u>Description</u>
402-ASS-003	Walk-On Flushglaze cross section
402-ASS-008	Walk-On Flushglaze with wall abutment
402-ASS-016	Walk-On Flushglaze multi-part with back-to-back angles
402-ASS-048	Walk-On Flushglaze EPDM cross section
402-ASS-050	Internal Walk-on Flushglaze
402-ASS-053	Circular Walk-on Flushglaze kerb detail



Optional Extras

Remote Control:	N/A		
Rain Sensor:	N/A	Rain Sensor Overrides:	
		Internal mounted Isolator Switch:	N/A
		Frame mounted Push Button:	N/A
		External mounted Key Switch:	N/A
		External mounted Digital Keypad:	N/A
Solenoid Bolt:	N/A	Dual Colour:	YES
Thermostat:	N/A	Special Colour:	YES
BMS Integration:	N/A	Ritec Coating:	YES
Trickle Vents:	NO (Bespoke)	Downlighter:	NO
Wall Abutted:	YES	Multi-Part	YES
Round:	YES (But external fixings will be visible)	Multi-Part with Glass Fins	NO

