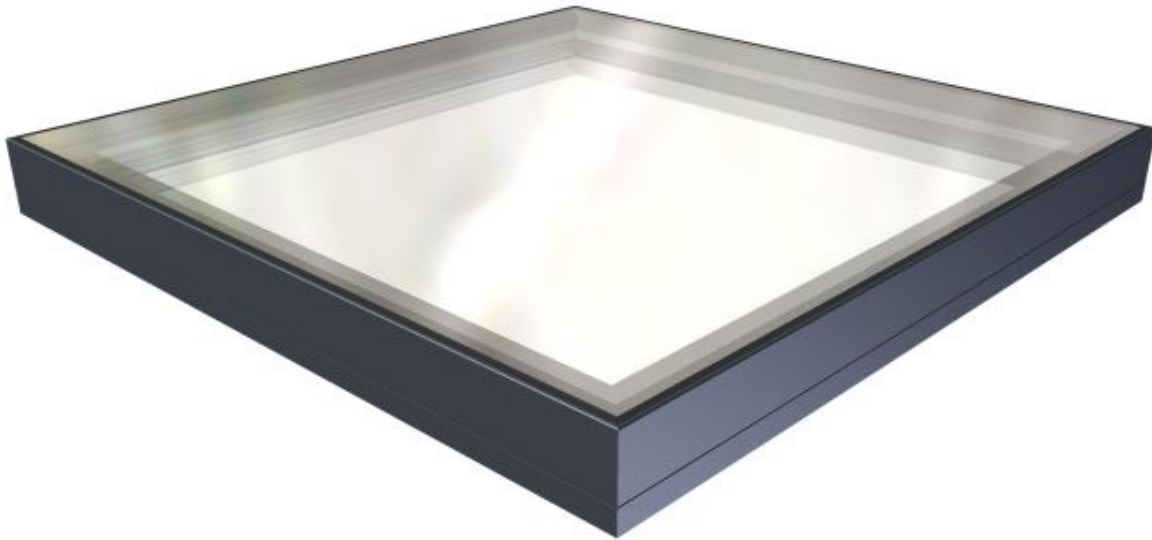


PRODUCT DATA SHEET



Name:	Flushglaze (Triple Glazed)						
Code:	402						
Type:	Fixed Rooflight						
Description:	<p>A fixed glazing system comprising painted aluminium extrusion and triple glazed unit. Designed to be installed between 3° and 70° from horizontal. Available in either single or multipart format, the latter consisting of multiple sections of glazing.</p> <p>Flushglaze rooflights are designed to provide maximum daylight with minimal visible internal structure.</p>						
NEW Features:	<p>No visible fixings. Achieved using a Glazing Vision design clip-on detail which covers over structural fixings to leave a completely flush external finish.</p> <p>External insulated clip-on flashing on wall abutment detail to improve thermal performance and reduce risk of condensation forming internally.</p> <p>Increased strength for bonded frames through additional and improved cleating.</p> <p>New and improved product support data including; sales drawings, schedule and manufacturing information.</p> <p>New kerb cover extrusion to mask the structure of the kerb top from external visibility. This is an optional extra.</p>						
Standard Glass Specification:	<p>Outer: 6mm Clear Toughened Outer Spacer: 12mm Black Silicone Sealed Argon filled cavity with warm edge spacer Centre: 6mm Clear Soft Coat Low E Toughened Inner Spacer: 16mm Black Silicone Sealed Argon filled cavity. Inner: 6mm Clear Soft Coat Low E Toughened.</p> <p>Properties for standard glass specification:</p> <table><tr><td>Centre pane U-value = 0.77 W/m²K</td><td>Shading Coefficient = 0.62</td></tr><tr><td>Light Transmittance = 68%</td><td>Mass = 45 Kg/m²</td></tr><tr><td>Light Reflectance = 17.0%</td><td></td></tr></table>	Centre pane U-value = 0.77 W/m ² K	Shading Coefficient = 0.62	Light Transmittance = 68%	Mass = 45 Kg/m ²	Light Reflectance = 17.0%	
Centre pane U-value = 0.77 W/m ² K	Shading Coefficient = 0.62						
Light Transmittance = 68%	Mass = 45 Kg/m ²						
Light Reflectance = 17.0%							
Standard Colour:	RAL 7015 Grey						

PRODUCT DATA SHEET

Roolight Control:	N/A												
Power Supply:	N/A												
Drive Mechanism:	N/A												
Thermally Broken:	Only on wall abutment detail.												
Thermal Performance (U-Value):	Overall U-Value = 1.003 Wm ² K (1200mm x 1200mm Overall Kerb Dimension)												
Seals:	Combination of Silicone, Poly-Butyl and Rubber seals.												
Security:	Secured to kerb with structural fixings and poly-butyl adhesive.												
Kerb Dimensions:	<table> <tr> <td>Min Height = 150mm</td> <td></td> </tr> <tr> <td>Min Thickness = 75mm</td> <td></td> </tr> <tr> <td>Min Span = 450mm</td> <td>Max Span = 4000mm</td> </tr> <tr> <td>Min Width = 450mm</td> <td>Max Width = 4000*mm</td> </tr> <tr> <td>Min Pitch = 3° (Recommended = 5°)</td> <td>Max Pitch = 70°</td> </tr> <tr> <td></td> <td>Max Kerb Area = 5.2m² * (3.25m² * when laminated inner)</td> </tr> </table>	Min Height = 150mm		Min Thickness = 75mm		Min Span = 450mm	Max Span = 4000mm	Min Width = 450mm	Max Width = 4000*mm	Min Pitch = 3° (Recommended = 5°)	Max Pitch = 70°		Max Kerb Area = 5.2m ² * (3.25m ² * when laminated inner)
Min Height = 150mm													
Min Thickness = 75mm													
Min Span = 450mm	Max Span = 4000mm												
Min Width = 450mm	Max Width = 4000*mm												
Min Pitch = 3° (Recommended = 5°)	Max Pitch = 70°												
	Max Kerb Area = 5.2m ² * (3.25m ² * when laminated inner)												

**For multipart, this is per section*

NOTE: MAXIMUM SPAN/WIDTH VARIES DEPENDANT ON THE OTHER.
ALWAYS USE THE SCHEDULE TO CONFIRM SIZES.

Use for Access: N/A

Sales Drawings:	<u>Drawing Number</u>	<u>Description</u>
	402-ASS-024	Triple Glazed Flushglaze typical detail
	402-ASS-031	Multi-Part Triple Glazed Flushglaze with Glass Fin across fall (K – K)
	402-ASS-032	Multi-Part Triple Glazed Flushglaze with Glass Fin 3 - 5° (K – K)
	402-ASS-033	Multi-Part Triple Glazed Flushglaze with Glass Fin over 5° (K – K)
	402-ASS-034	Multi-Part Triple Glazed Flushglaze with Glass Fin across fall (W – K)
	402-ASS-035	Multi-Part Triple Glazed Flushglaze with Glass Fin 3 - 5° (W – K)
	402-ASS-037	Triple Glazed Flushglaze with silicone joint
	402-ASS-038	Triple Glazed Flushglaze with back-to-back angles
	402-ASS-039	Triple Glazed Flushglaze with wall abutment

Optional Extras

Remote Control:	N/A		
Rain Sensor:	N/A	Rain Sensor Overrides:	
		Internal mounted Isolator Switch:	N/A
		Frame mounted Push Button:	N/A
		External mounted Key Switch:	N/A
		External mounted Digital Keypad:	N/A
Solenoid Bolt:	N/A	Dual Colour:	YES
Thermostat:	N/A	Special Colour:	YES
BMS Integration:	N/A	Ritec Coating:	YES
Trickle Vents:	NO (Bespoke)	Downlighter:	NO
Wall Abutted:	YES	Multi-Part	YES
Round:	YES (But external fixings will be visible)	Multi-Part with Glass Fins	YES