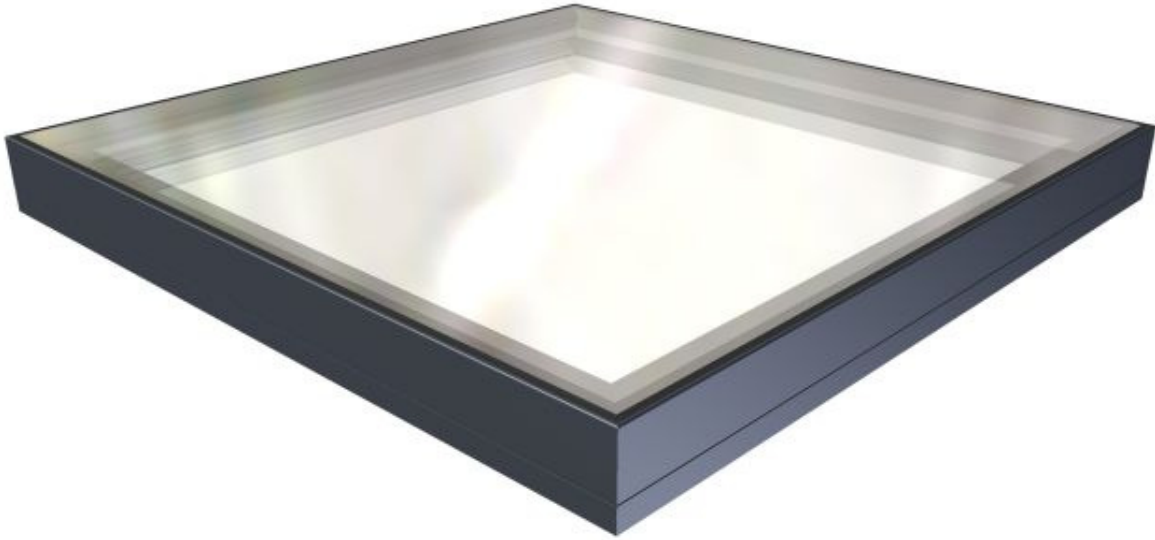


PRODUCT DATA SHEET



Name: Flushglaze (Double Glazed)

Code: 402

Type: Fixed Rooflight

Description: A fixed glazing system comprising painted aluminium extrusion and double glazed unit. Designed to be installed at between 3° and 70° from horizontal. Available in either single or multipart format, the latter consisting of multiple sections of glazing. Flushglaze rooflights are designed to provide maximum daylight with minimal visible internal structure.

NEW Features:

- No visible fixings. Achieved using a Glazing Vision design clip-on detail which covers over structural fixings to leave a completely flush external finish.
- External insulated clip-on flashing on wall abutment detail to improve thermal performance and reduce risk of condensation forming internally.
- Increased strength for bonded frames through additional and improved cleating.
- New and improved product support data including; sales drawings, schedule and manufacturing information.
- New kerb cover extrusion to mask the structure of the kerb top from external visibility. This is an optional extra.

Standard Glass Specification:

Outer: 6mm Clear Toughened.
Spacer: 16mm Black Silicone Sealed Argon filled cavity with warm edge spacer
Inner: 6mm Clear Soft Low E Toughened.

Properties for standard glass specification:

Centre pane U-value = 1.1W/m ² K	Shading Coefficient = 0.71
Light Transmittance = 77.0%	Sound Insulation (Rw) = 31dB
Light Reflectance = 11.3%	Mass 30 Kg/m ²

Standard Colour: RAL 7015 Grey

Rooflight Control: N/A

PRODUCT DATA SHEET

Power Supply:	N/A														
Drive Mechanism:	N/A														
Thermally Broken:	Only on wall abutment detail.														
Thermal Performance (U-Value):	Overall U-Value = 1.387 Wm ² K (1200mm x 1200mm Overall Kerb Dimension)														
Seals:	Combination of Silicone, Poly-Butyl and Rubber seals.														
Security:	Secured to kerb with structural fixings and poly-butyl adhesive.														
Kerb Dimensions:	<table> <tr> <td>Min Height = 150mm</td> <td></td> </tr> <tr> <td>Min Thickness = 75mm</td> <td></td> </tr> <tr> <td>Min Span = 450mm</td> <td>Max Span = 4000mm</td> </tr> <tr> <td>Min Width = 450mm</td> <td>Max Width = 4000*mm</td> </tr> <tr> <td>Min Pitch = 3°</td> <td>Max Pitch = 70°</td> </tr> <tr> <td></td> <td>Max Kerb Area = 5.2m²*</td> </tr> <tr> <td></td> <td>(3.25m²* when laminated inner)</td> </tr> </table>	Min Height = 150mm		Min Thickness = 75mm		Min Span = 450mm	Max Span = 4000mm	Min Width = 450mm	Max Width = 4000*mm	Min Pitch = 3°	Max Pitch = 70°		Max Kerb Area = 5.2m ² *		(3.25m ² * when laminated inner)
Min Height = 150mm															
Min Thickness = 75mm															
Min Span = 450mm	Max Span = 4000mm														
Min Width = 450mm	Max Width = 4000*mm														
Min Pitch = 3°	Max Pitch = 70°														
	Max Kerb Area = 5.2m ² *														
	(3.25m ² * when laminated inner)														

**For multipart, this is per section*

NOTE: MAXIMUM SPAN/WIDTH VARIES DEPENDANT ON THE OTHER.
ALWAYS USE THE SCHEDULE TO CONFIRM SIZES.

Use for Access: N/A

Sales Drawings:

<u>Drawing Number</u>	<u>Description</u>
402-ASS-001	Standard Flushglaze Cross Section
402-ASS-004	Flushglaze with Wall Abutment Section
402-ASS-013	Pitched Flushglaze Head Detail
402-ASS-014	Multi-Part FG with Glass Fin
402-ASS-015	Multi-Part FG with Back-to-Back Angles
402-ASS-021	Multi-Part FG with Glass to Glass Joints
402-ASS-025	Multi-Part FG with Glass Fin Across Fall (K-K)
402-ASS-026	Multi-Part FG with Glass Fin 3-5 Degrees (K-K)
402-ASS-027	Multi-Part FG with Glass Fin Over 5 Degrees (K-K)
402-ASS-028	Multi-Part FG with Glass Fin Across Fall (W-K)
402-ASS-029	Multi-Part FG with Glass Fin 3-5 Degrees (W-K)
402-ASS-030	Multi-Part FG with Glass Fin Over 5 Degrees (W-K)
402-ASS-047	Boat Installation Typical Kerb Detail

Optional Extras

Remote Control: N/A

Rain Sensor: N/A

Rain Sensor Overrides:

Internal mounted Isolator Switch:	N/A
Frame mounted Push Button:	N/A
External mounted Key Switch:	N/A
External mounted Digital Keypad:	N/A

Solenoid Bolt: N/A

Dual Colour: YES

Thermostat: N/A

Special Colour: YES

BMS Integration: N/A

Ritec Coating: YES

Trickle Vents: NO (Bespoke)

Downlighter: NO

Wall Abutted: YES

Multi-Part YES

Round: YES (But external fixings will be visible)

Multi-Part with Glass Fins YES