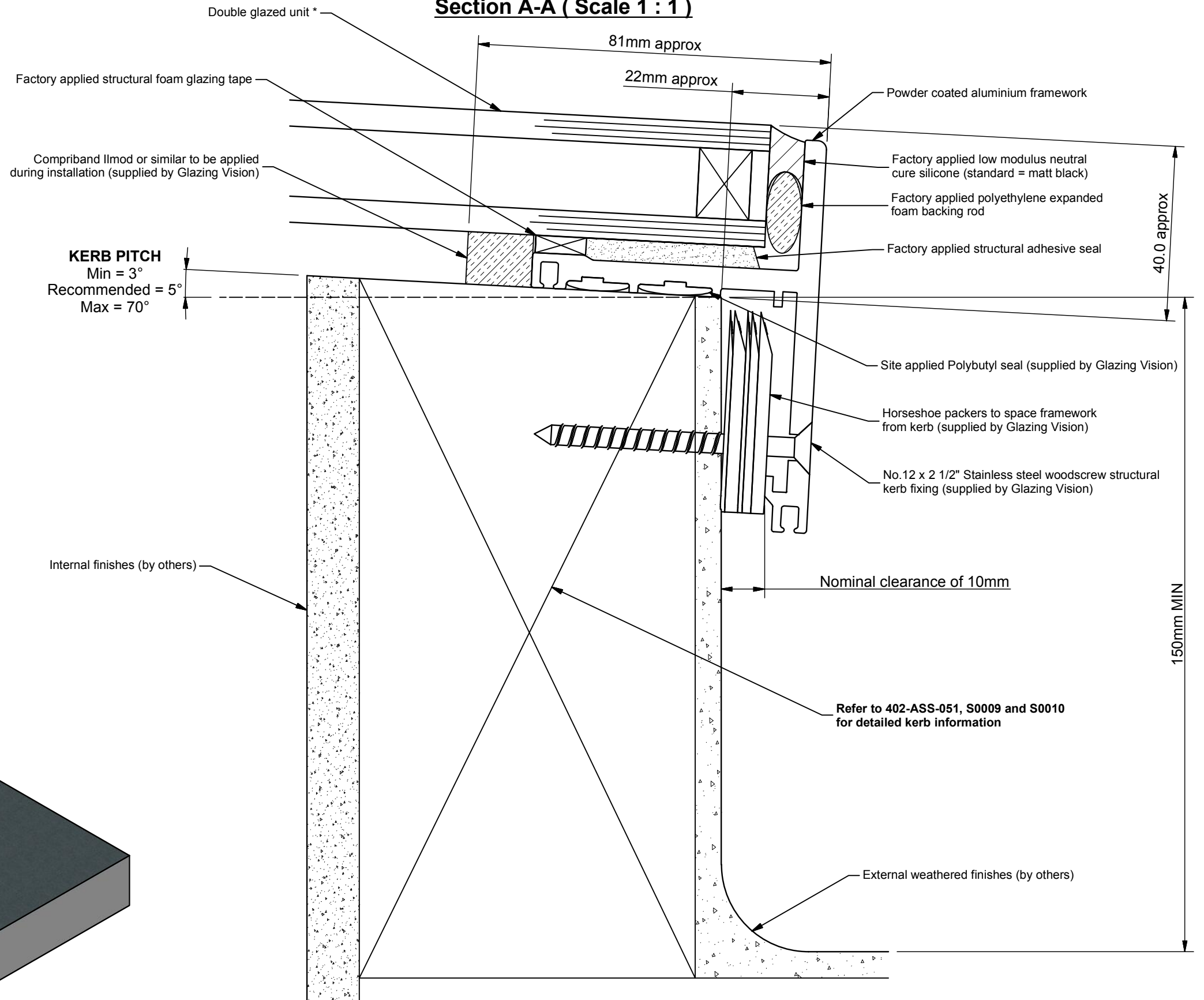


Section A-A (Scale 1 : 1)



* Standard double glazed unit:
6mm toughened outer
16mm argon filled cavity, black warm edge spacer
6mm toughened soft coat low E inner

Rev	Revision Description	Drawn/Date

Product: 402 - GV Standard Flushglaze		Checked By:
Description: Circular Double-glaze Flushglaze kerb detail		
Materials: As above		Check Date:
Finish: Std = RAL7015 Grey	Drawn By: PGW	
Weight: N/A	Drawn Date: 15/9/11	
Quantity: N/A	Drawing No: 402-ASS-052	
Scale: 1:1 @ A3		